

TEMPORE

EDIFICIO

SUPERFICIE ÚTIL CERRADA

| | |
|--------------|----------------------|
| VESTIBULO | 5,60 m ² |
| COCINA | 12,60 m ² |
| SALÓN | 22,50 m ² |
| DISTRIBUIDOR | 3,60 m ² |
| BAÑO 1 | 3,70 m ² |
| BAÑO 2 | 3,70 m ² |
| DORMITORIO 1 | 15,20 m ² |
| DORMITORIO 2 | 10,70 m ² |
| DORMITORIO 3 | 11,10 m ² |

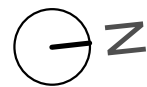
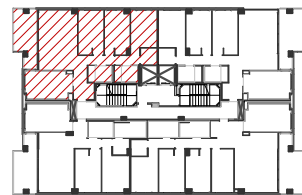
TOTAL (A) **88,70 m²**

SUPERFICIE ÚTIL TERRAZAS

| | |
|-----------|----------------------|
| TERRAZA 1 | 11,40 m ² |
|-----------|----------------------|

TOTAL (B) **11,40 m²**

TOTAL (A+B) **100,10 m²**



EDIFICIO TEMPORE

01-10 A

